

Water Management

Many of our operations at Walker Industries manage large amounts of water. We have the potential to impact drinking water, ground water and surface water resources. Our operations are to be managed and operated to prevent pollution, minimize our impacts on water sources and conserve water while staying in compliance with applicable laws and regulations.



When managing water:

- Practice water protection and conservation
- Avoid contamination of water supplies; do not pour or discharge liquids into water or sewer systems
- Only make approved discharges to the sewer or water systems
- Store materials in a manner that prevents releases to the ground, sewer or water systems
- Collect and dispose of all waste in an approved manner
- Know how to respond in the event of a spill
- Design and build water systems with sufficient capacity
- Use licensed professionals (i.e. engineers, designers) in the design of water systems (i.e. septic, sewer, wastewater control, plumbing, etc.)
- Respond to complaints from neighbours regarding water supply/quality concerns

Permits to Take Water:

- a) Obtain a permit from the Ministry of the Environment and Climate Change prior to taking water from a ground or surface water source. A permit is required if more than 50,000 litres of water will be pumped in a day.
- b) Ensure compliance with water taking permit requirements
- c) Monitor and record daily water taking volumes. This includes pumping volumes and water used for dust suppression
- d) Monitor water levels in the vicinity of water taking activities to assess potential impacts

Strive
FOR
Wise

DID YOU KNOW?

- More information on managing water can be found in Procedure R7 - Water Management in the EARTH 1st Manual, including:
- Maintenance
 - Ground Water and Surface Water
 - Wells (Water/Monitoring)
 - Working Near Water Systems
 - Sanitary Sewers
 - Septic Systems
 - Water Conservation

Water Management

Company _____ Date _____ Delivered by _____

Other topics discussed _____

Name	Signature	Name	Signature

QUESTIONS/DISCUSSIONS

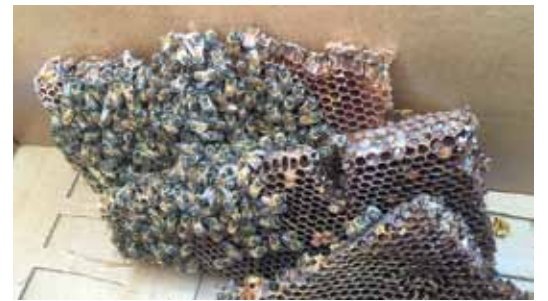
RECORD RESPONSES SPECIFIC TO YOUR SITE

- To whom do you report any potential problems such as leaking faucets, valves, and hoses for repair?

- What activities do you do that could impact water at work or at home? _____
- If applicable, what preventative maintenance program do you have in place for pumps, valves, water/wastewater systems and storage tanks? _____
- If applicable, when does your Permit to Take Water expire? _____



Amanda Skelding & Jay Thatcher



Steve Paxton

EARTH 1st Champions for January 2016:

Bees seem to really like our Niagara Campus this year!

At the beginning of December, the residential drop-off received a load of tree trunks for grinding. Krisztina Nagy, an employee at the compost site, quickly noticed that there was a bee hive in one of them! Amanda Skelding, a local bee keeper from Szabo Queens arrived on-site on December 9 to rescue the hive with the help of her friend, Jay Thatcher. The original plan was to cut out a section of the trunk and take the hive with them, but upon further investigation it was found that a majority of the large trunk was hive! With the assistance of Steve Paxton, a Mobile Grinder employee, the trunk was safely moved to another location on-site and boarded up for the winter to allow the bees to safely hibernate. The new location allows for the tree trunk to be protected from winter winds with small openings available for the bees to come and go as needed. Amanda estimated that there are approximately 20,000 to 30,000 bees in the colony!

In the spring, Amanda will return when the bees start to wake from hibernation and try to locate the queen in order to rescue the colony. They will be relocated and put into traditional hives. Once all of the bees are safely relocated, the trunk will be split open to see the large hive inside!

A special thanks to Krisztina Nagy, Gareth Jones, Danny Schram, Dean King and Steve Paxton for taking the steps to protect the bees and support the health of our pollinators! Great Job!

Stay tuned for an update in our Spring 2016 EARTH 1st Newsletter!

More photos and a video of the bees can be found on the EARTH 1st Intranet under EARTH 1st Blog photos: <http://walkerhome/earth1st/earth1stblog/Lists/Photos/Forms/AllItems.aspx>



YOU ARE WONDERFUL!! CONGRATULATIONS!
Clearly no group can, as an entity, create ideas. Only individuals can do this. A group of individuals may, however, stimulate one another in the creation of ideas. Estill J. Green



We are the environment!
commit ■ create ■ participate