

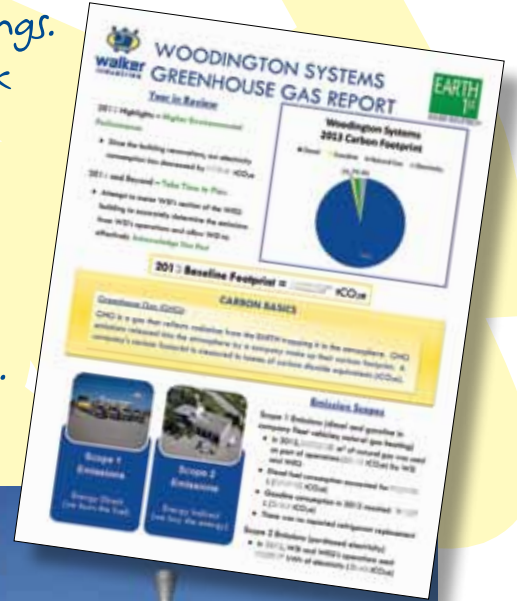
Carbon Footprint



Carbon is everywhere.

It is the element that forms the structure of all living things. Carbon is in the supply chain, in manufacturing, in offices, in employee work habits and travel. It's in packaging and final disposal of materials.

Carbon has become the unit of measurement of society's impacts on the environment. That unit of measure is CO₂e or carbon dioxide equivalent. By looking at what we do and how we do it, it is possible to calculate our carbon emissions. Our total CO₂e emissions added up form our carbon footprint.



Calculating a Carbon Footprint

The footprint considers all 6 of the Kyoto Protocol greenhouse gases:

- Carbon dioxide (CO₂)
- Methane (CH₄)
- Nitrous oxide (N₂O)
- Hydrofluorocarbons (HFCs)
- Perfluorocarbons (PFCs)
- Sulphur hexafluoride (SF₆)

A carbon footprint is measured in tonnes of carbon dioxide equivalent (tCO₂e). CO₂e is calculated by multiplying the emissions of each of the six greenhouse gases by its global warming potential (GWP).

Carbon Footprint - measures the total greenhouse gas emissions caused directly and indirectly by a person, organization, event or product.

Carbon Source - any process or activity where carbon is released into the environment.

Carbon Sink - a process or activity where carbon is taken from the environment.

Strive
FOR Wise

DID YOU KNOW?

- Site specific carbon footprint fact sheets are available on each site's Environmental Intranet page.
- Environmental Messengers on Carbon Impact Measurement, The Carbon Economy, Carbon Sources & Sinks, and Carbon Boundaries are available on the EARTH 1st Intranet site under Monthly Messengers.
- Ontario has joined the Western Climate Change Initiative and will be introducing a cap and trade system. Cap and Trade monetizes carbon. This initiative makes reducing our carbon footprint a business imperative.



We are the environment!
commit ■ create ■ participate

All your questions and discussion topics are on the reverse side - get talking!



THE MESSENGER
EFFICIENTLY OPERATE

**June
2015**

Carbon Footprint

Company _____ Date _____ Delivered by _____

Other topics discussed _____

Name	Signature	Name	Signature

QUESTIONS/DISCUSSIONS

RECORD RESPONSES SPECIFIC TO YOUR SITE

1. Based on your most recent carbon footprint fact sheet, what is your largest source of emissions on-site? _____

2. What recent changes have you made that reduce your role as a carbon source? _____

3. How would you manage the emissions from contractors doing work on-site? _____

4. What choices do you or could you make to reduce your personal carbon footprint? _____

The Carbon Footprint Champion for 2014 is Walker Brothers Asphalt!

The Walker Brothers Asphalt plant has made significant production improvements to reduce electricity and natural gas consumption and improve its overall performance. These improvements include significantly reducing the length of oil lines to effectively heat and circulate hot oil, double insulating hot oil lines to prevent heat loss and conserve energy, replacing a 40 year old hot oil heater with a new model and replacing 5 hot oil pumps with high efficiency motors.

In 2014, Walker Brothers Asphalt reduced their total production carbon footprint by 7% and their total consumption of electricity by 40%. Way to set the bar Walker Brothers Asphalt!



Terry Johnson



Mike Camposarcone



High Efficiency Motor



We are the environment!
commit ■ create ■ participate

Clearly no group can, as an entity, create ideas. Only individuals can do this. A group of individuals may, however, stimulate one another in the creation of ideas. Estill I. Green

YOU ARE WONDERFUL!! CONGRATULATIONS!